

Shinkansen Stations in Last Decade

JR Kyushu: Kyushu Shinkansen

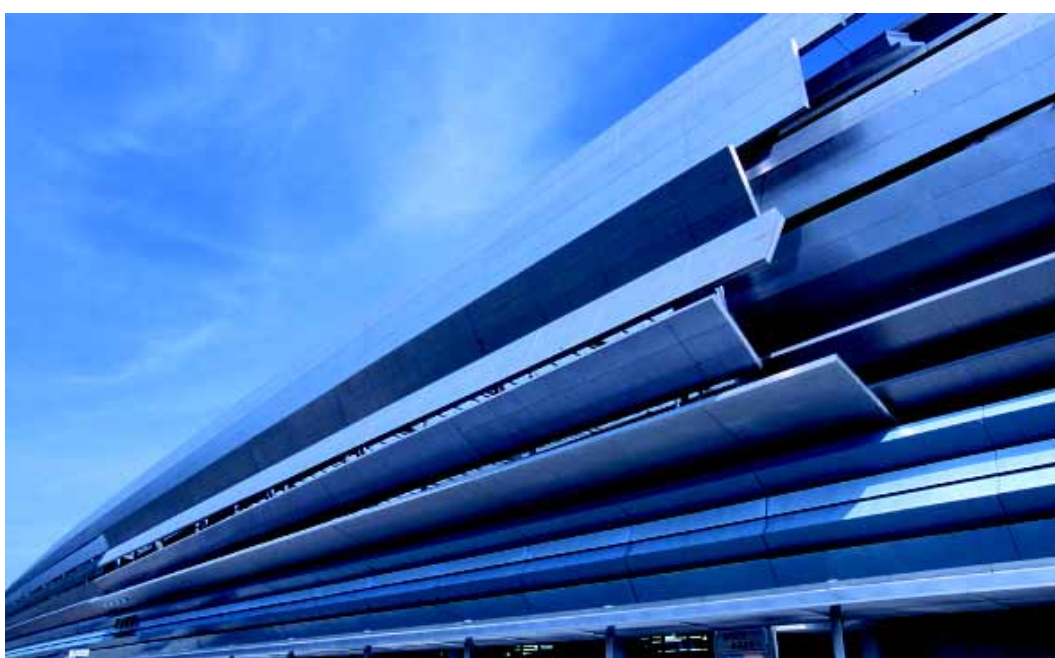
JR Kyushu constructed new five station buildings for its Kyushu Shinkansen when the southern part was opened in March 2004: Shin Yatsushiro, Shin Minamata, Izumi, Sendai and Kagoshima Chuo. All buildings serve as both shinkansen stations and as conventional-line stations for JR Kyushu's Kagoshima main line and the third-sector Hisatsu Orange Railway, formerly part of the Kagoshima main line.



Photos: JR Kyushu



Shin Yatsushiro Station: The *Relay Tsubame* (Swallow) limited-express trains from Fukuoka connect with Kyushu Shinkansen's *Tsubame* on the same platform (see p. 50). Other local trains arrive and depart from different platforms.



Shin Minamata Station: Approximately one train (one way) stops here every hour. The third-sector Hisatsu Orange Railway also stops here.

(Continued on p. 61)

JR Kyushu: Kyushu Shinkansen (Continued)

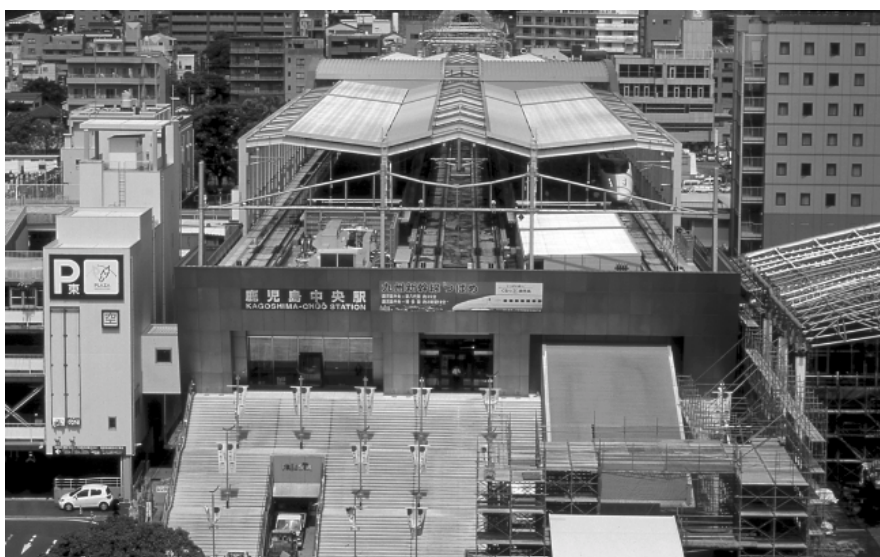
Izumi Station: The new station building was constructed at the time of Kyushu Shinkansen and Hisatsu Orange Railway in March 2004. It was attached to the existing conventional station, which is now closed.



Sendai Station: When JR Kyushu handed over its Sendai–Yatsushiro section to the Hisatsu Orange Railway at the time of Kyushu Shinkansen opening, this station became the 'border' between JR Kyushu and Hisatsu Orange Railway.



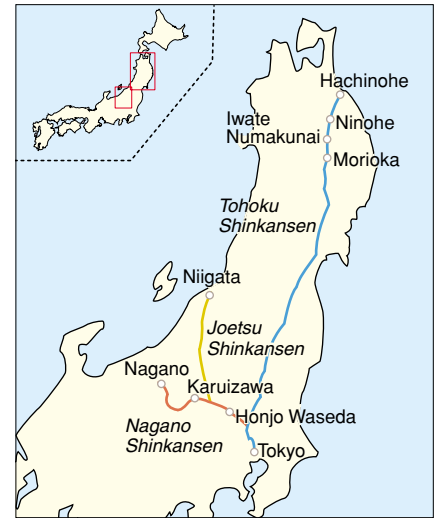
Kagoshima Chuo Station: Although the next Kagoshima Station is the terminal for the Kagoshima and Nippo main line, all express trains from both main lines terminate at Kagoshima Chuo (Central), making it the gateway for Kagoshima City, the business and cultural centre of southern Kyushu. The station name was changed from Nishi (West) Kagoshima when the Kyushu Shinkansen opened.



JR East: Joetsu, Nagano and Tohoku Shinkansen

JR East's shinkansen network has expanded over the last decade. The Nagano Shinkansen was opened in October 1997 for 1998 Winter Olympics in Nagano. The Tohoku Shinkansen was extended from Morioka to Hachinohe in December 2002, with two intermediate stations.

Recently, Honjo Waseda Station was opened on Joetsu Shinkansen. It was named after Waseda University due to its proximity of the university's Honjo Campus. The area is expected to develop as a newly emerging city center in the future.



Photos: JR East



Honjo Waseda Station: The sole shinkansen station (no conventional-line stations attached) opened in March 2004. Honjo Station on Takasaki Line, the conventional-line station, is located approximately 2 km to the north.



Karuizawa Station: This new station building located at 1000-m above sea level opened in October 1997 to serve one of Japan's most popular tourist destinations. The third-sector Shinano Railway, formerly part of JR East's Shin'etsu main line, terminates at this station. The old wooden station building is preserved as a small museum near the new station.

Iwate Numakunai Station: The former Numakunai Station was renamed Iwate Numakunai Station when Tohoku Shinkansen's extension to Hachinohe was opened and the Morioka–Metoki section of JR East Tohoku main line was handed over to the newly founded third sector operator, the Iwate Ginga (galaxy) Railway.



Ninohe Station: The platforms for both the Iwate Ginga Railway's conventional tracks and Tohoku shinkansen tracks are located at the ground level under a huge snow shelter covering the entire station.



Hachinohe Station: Located on the outskirts of the old port town of Hachinohe, this station was called Shiriuchi until some decades ago, with the original Hachinohe Station near the city centre but on a branch line called Hachinohe Line. In response to the local residents' request to have a Hachinohe station on the Tohoku main line, JNR changed the station names from Shiriuchi to Hachinohe, and Hachinohe to Hon (true) Hachinohe in 1971. At the opening of the Hachinohe extension of Tohoku Shinkansen, the Metoki–Hachinohe section of Tohoku main line was handed over to another third-sector operator, the Aoi Mori Railway, and the remainder of Tohoku main line starts from here for Aomori, making this station a terminus for four different lines.

